

Outlander

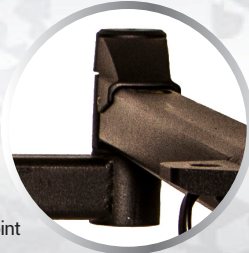
Exterior Lift Swing-Away Adaptor



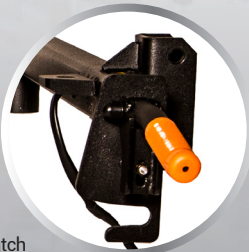
Safety Pin



Pivot Joint



Auto-Latch
Mechanism Handle



*Shown mounted to vehicle on
Outlander Lift assembly

NEW FEATURES

The newly redesigned Swing-Away Adaptor allows the Outlander Exterior Lift to effortlessly pivot away from a vehicle for even easier access to trunks, cargo spaces, lift gates and tailgates

New auto-latching mechanism features a larger diameter pivot post, ensuring increased strength, durability and smoother operation

Enlarged handle and safety locking pin provide improved usability

A lightweight, streamlined design with enhanced rust protection offer reliable Pride Tough™ quality with sleek aesthetics

Internally routed wiring harness eliminates pinched wires and protects against weather elements and exhaust heat

Compatible with Class II, III, IV hitches

350 lb. weight capacity

Weights only 41 lbs.

The optional Swing-Away Adaptor allows an Outlander Lift to be easily pivoted away from the vehicle for easy access to the trunk, lift gate or tailgate.